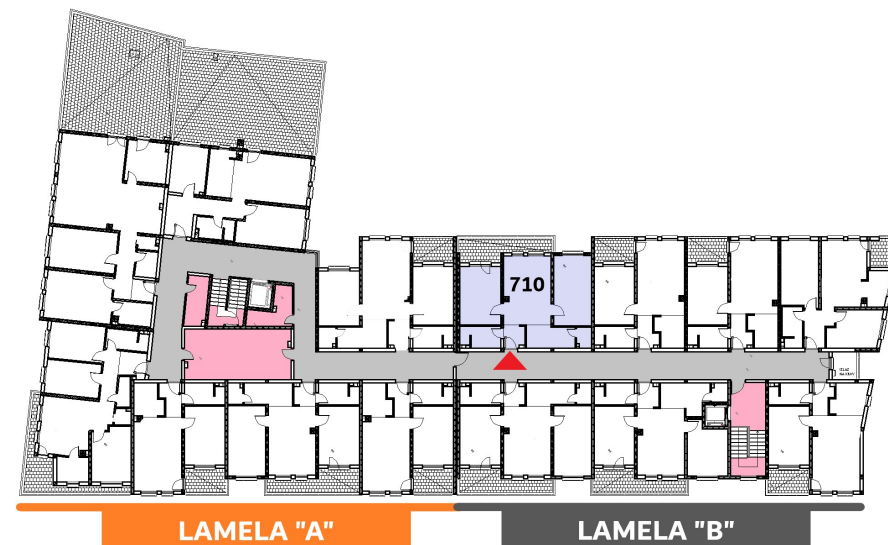
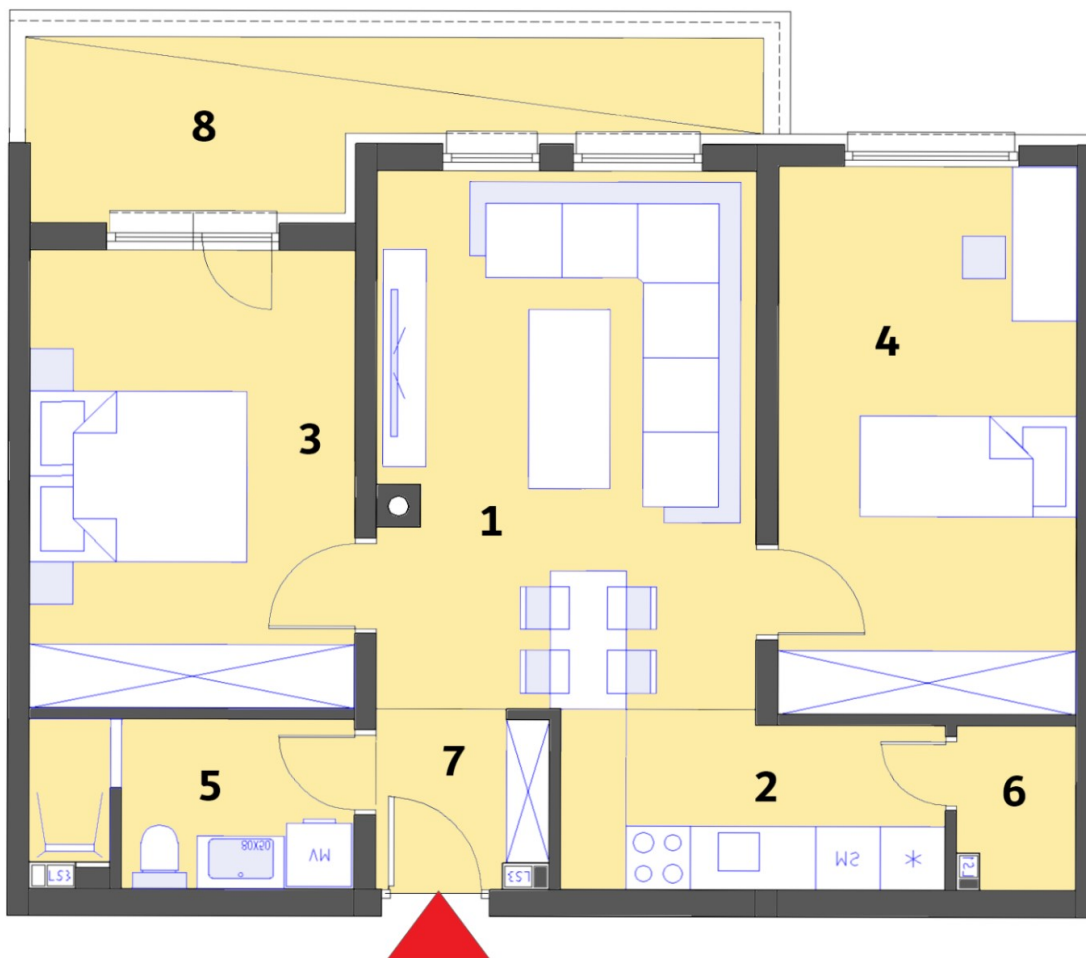


# Stambeni objekat „MALEZIJKKA“ - OSNOVA 6. KATA

Lamela "A" - Stan br. 710



STAN 710	Lamela B	Nivo: 6. KAT	
		Tip stana: TROSOBAN	
PROSTORIJE	[m <sup>2</sup> ]	Terasa	[m <sup>2</sup> ]
1. Dnevna soba + terpezarija	17,51	8. Terasa natkri.	8,22
2. Kuhinja	5,77		
3. Soba 1	14,16		
4. Soba 2	12,90		
5. Ostava	1,63		
6. Kupatilo	4,52		
7. Ulaz	2,57		
Ukupna NETTO pov.[m2]	63,17	0,5x	4,11
<b>Ukupno STAN 710</b>			<b>63,17</b>