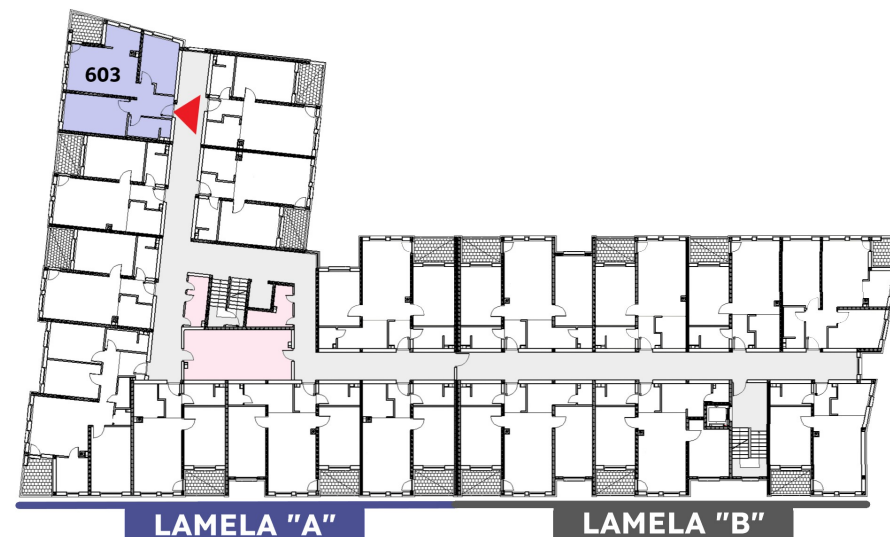
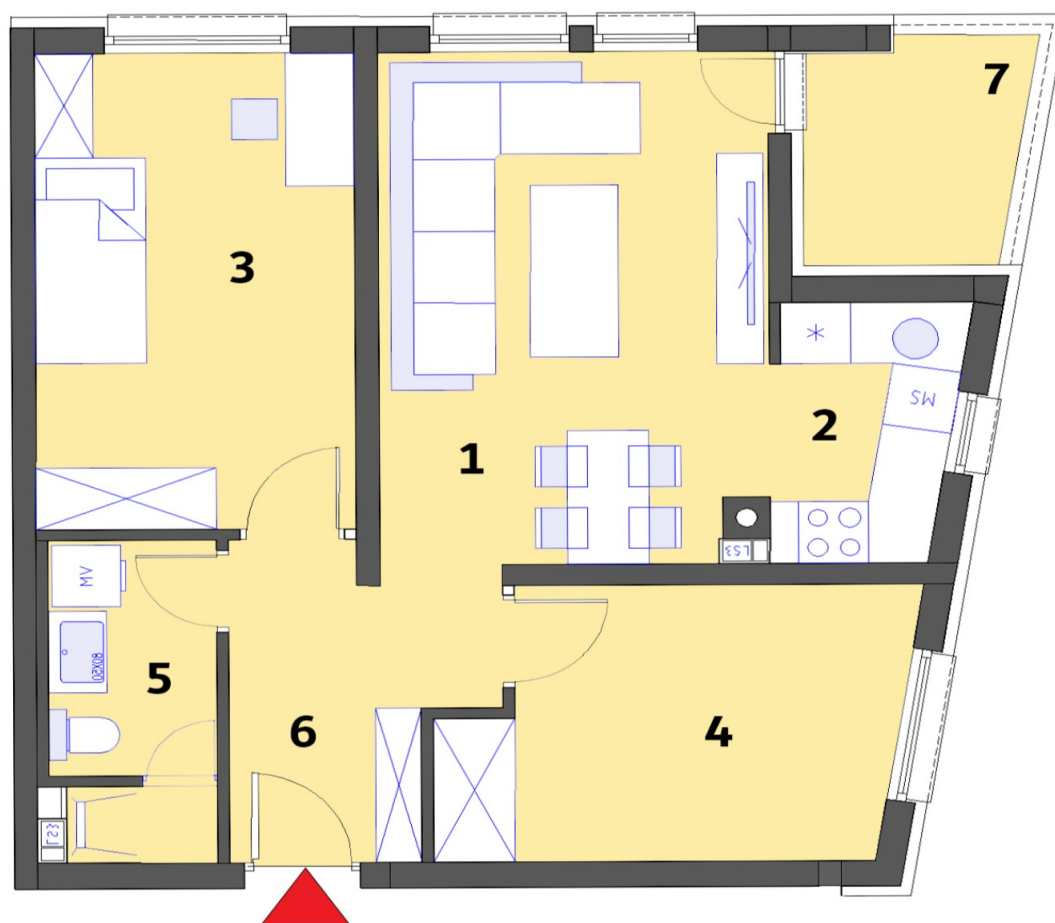


Stambeni objekat „MALEZIJKKA“ - OSNOVA 5. KATA

Lamela "A" - Stan br. 603



STAN 603	Lamela A	5. KAT	
		Nivo:	Tip stana:
		TROSOBAN	
PROSTORIJE	[m ²]	Lodje	[m ²]
1. Dnevna soba + terpezarija	16,49	7. Lodja	4,02
2. Kuhinja	3,92		
3. Soba 1	12,79		
4. Soba 2	9,91		
5. Kupatilo	4,37		
6. Hodnik	6,01		
Ukupna NETTO pov.[m2]	53,49	0,75x	3,02
Ukupno STAN 603			56,51