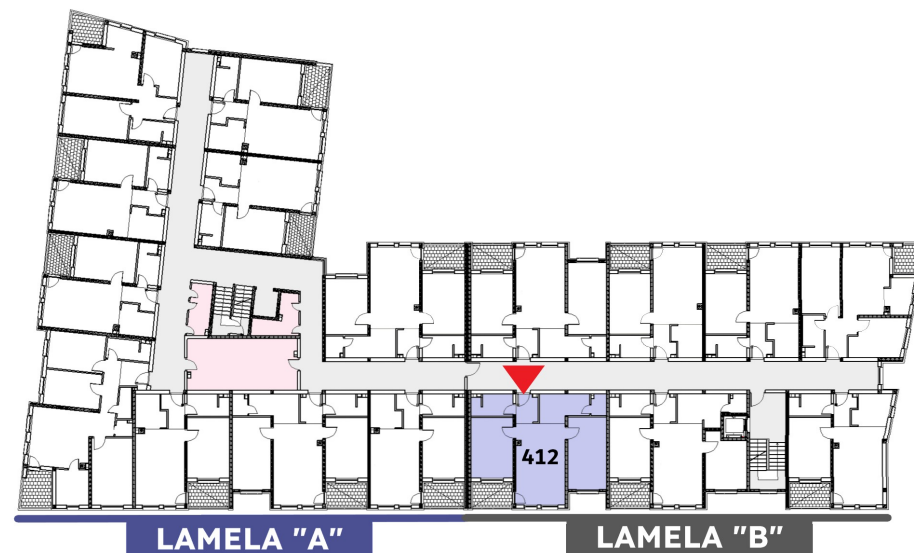
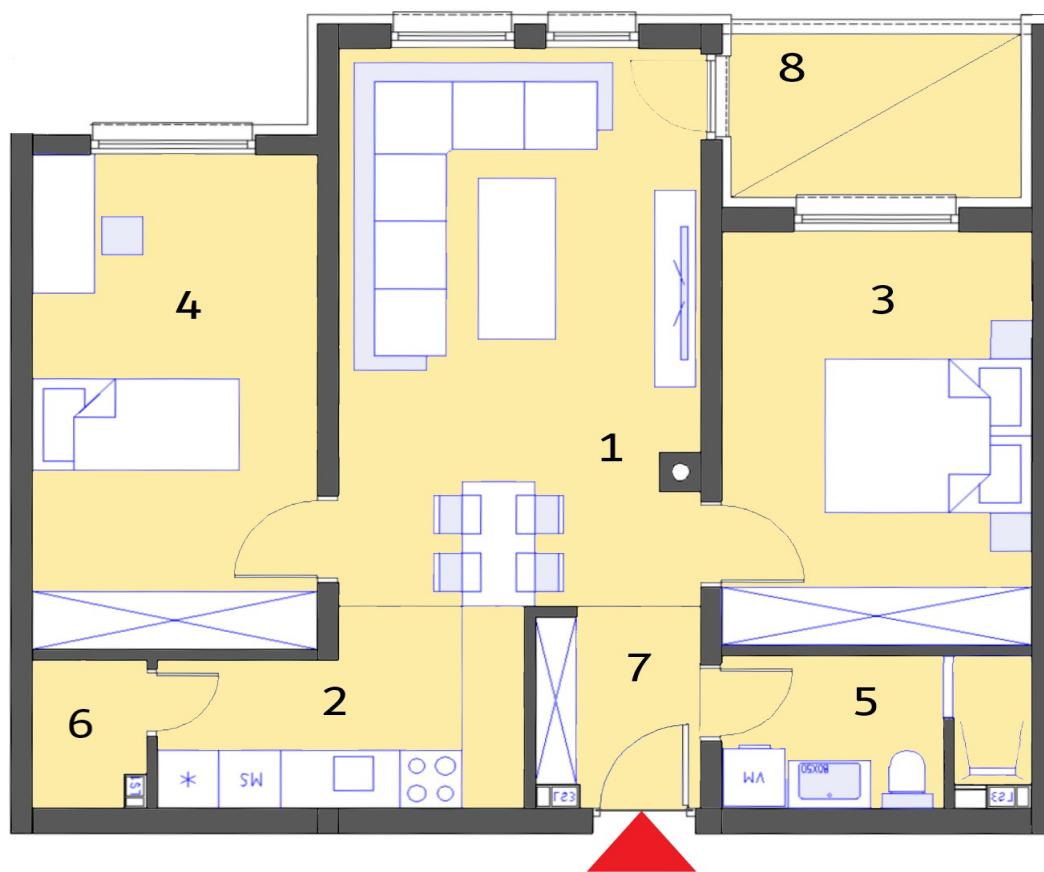


Stambeni objekat „MALEZIJKKA“ - OSNOVA 3. KATA

Lamela "B" - Stan br. 412



STAN 412	Lamela B	Nivo: 3. KAT	
		Tip stana: TROSOBAN	
PROSTORIJE	[m ²]	Lodje	[m ²]
1. Dnevna soba + terpezarija	20,14	8. Lodja	4,76
2. Kuhinja	6,49		
3. Soba 1	12,90		
4. Soba 2	14,16		
5. Kupatilo	4,52		
6. Ostava	1,63		
7. Ulaz	3,21		
Ukupna NETTO pov.[m2]	63,05	0,75x	3,57
Ukupno STAN 412			66,62