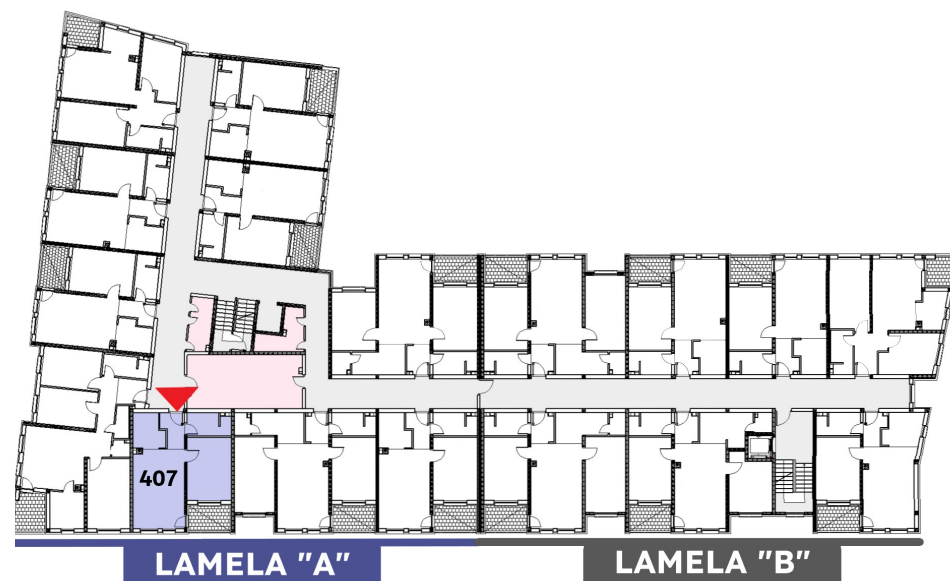
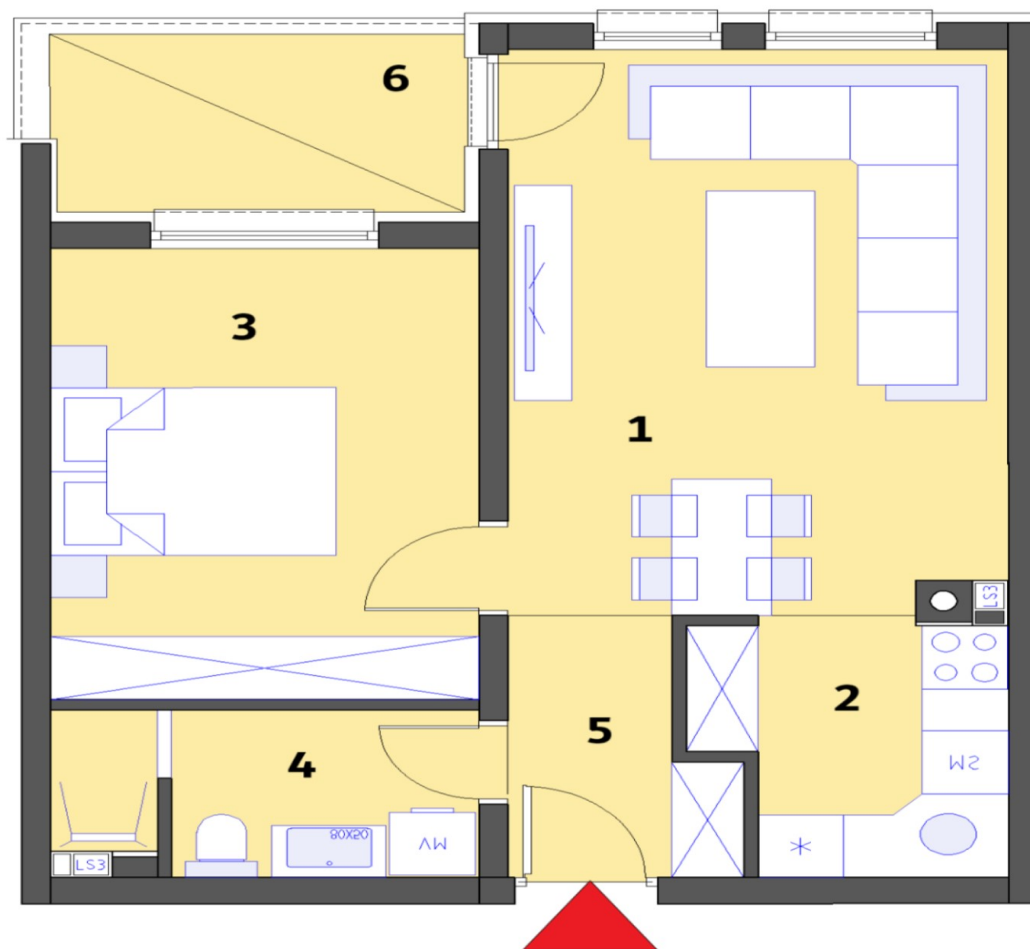


Stambeni objekat „MALEZIJKKA“ - OSNOVA 3. KATA

Lamela "A" - Stan br. 407



STAN 407	Lamela A	3. KAT	
		Nivo:	DVOSOBAN
PROSTORIJE	[m ²]	Lodje	[m ²]
1. Dnevna soba + terpezarija	18,68	6. Lodja	4,76
2. Kuhinja	4,91		
3. Soba 1	12,90		
4. Kupatilo	4,52		
5. Ulaz	3,43		
Ukupna NETTO pov.[m ²]	44,44	0,75x	3,57
Ukupno STAN 407			48,01