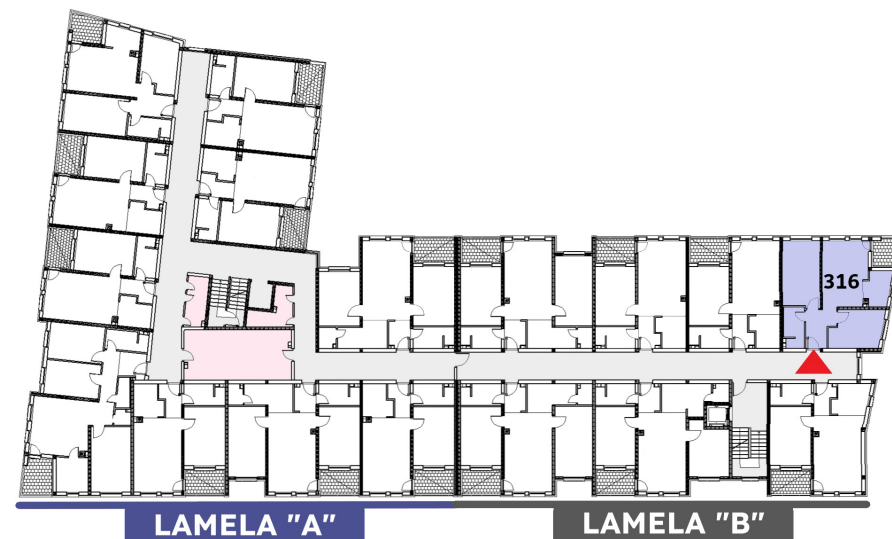
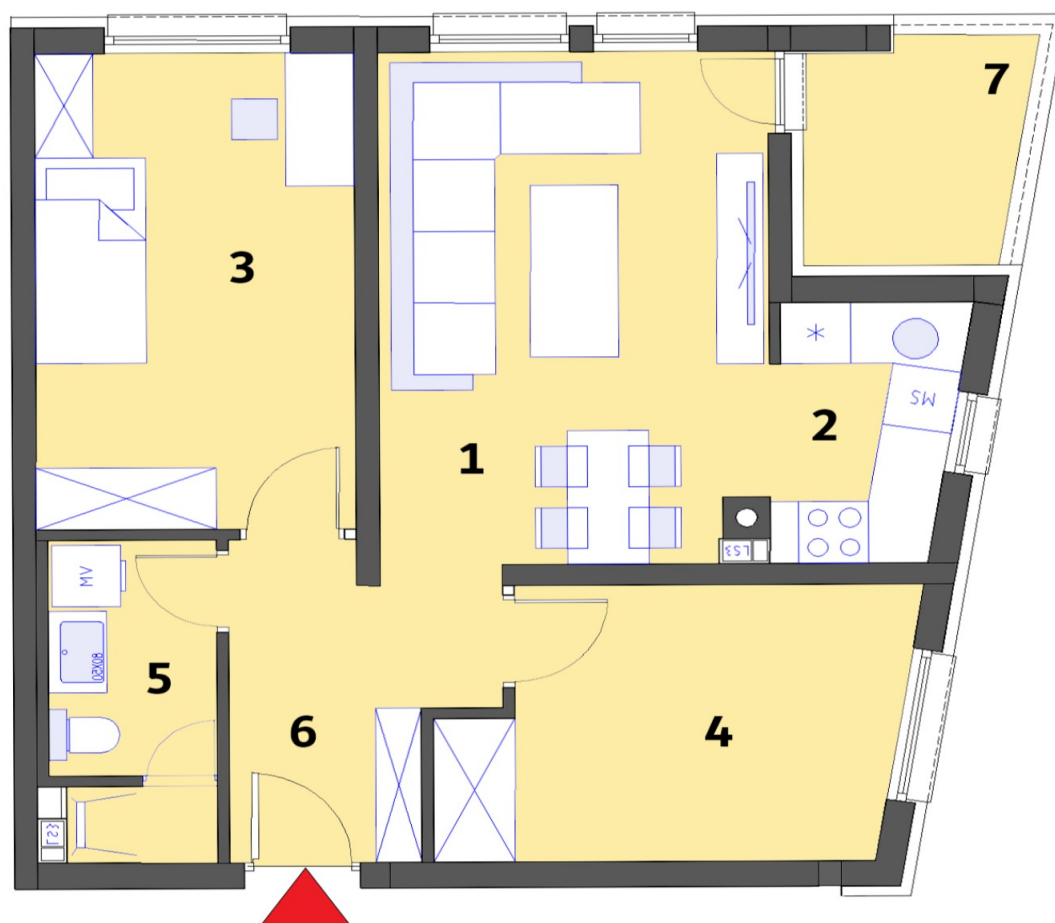


# Stambeni objekat „MALEZIJKKA“ - OSNOVA 2. KATA

Lamela "B" - Stan br. 316



STAN 316	Lamela B	Nivo:	2. KAT
		Tip stana:	TROSOBAN
PROSTORIJE	[m <sup>2</sup> ]	Lodje	[m <sup>2</sup> ]
1. Dnevna soba + terpezarija	15,52	7. Lodja	3,71
2. Kuhinja	4,54		
3. Soba 1	13,30		
4. Soba 2	10,18		
5. Kupatilo	4,38		
6. Hodnik	5,22		
Ukupna NETTO pov.[m <sup>2</sup> ]	53,14	0,75x	2,78
<b>Ukupno STAN 316</b>			<b>55,92</b>