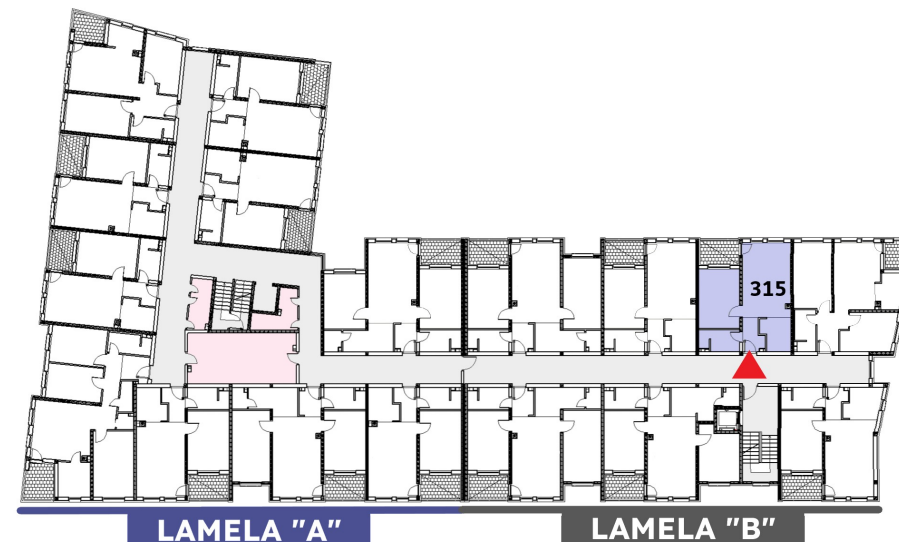
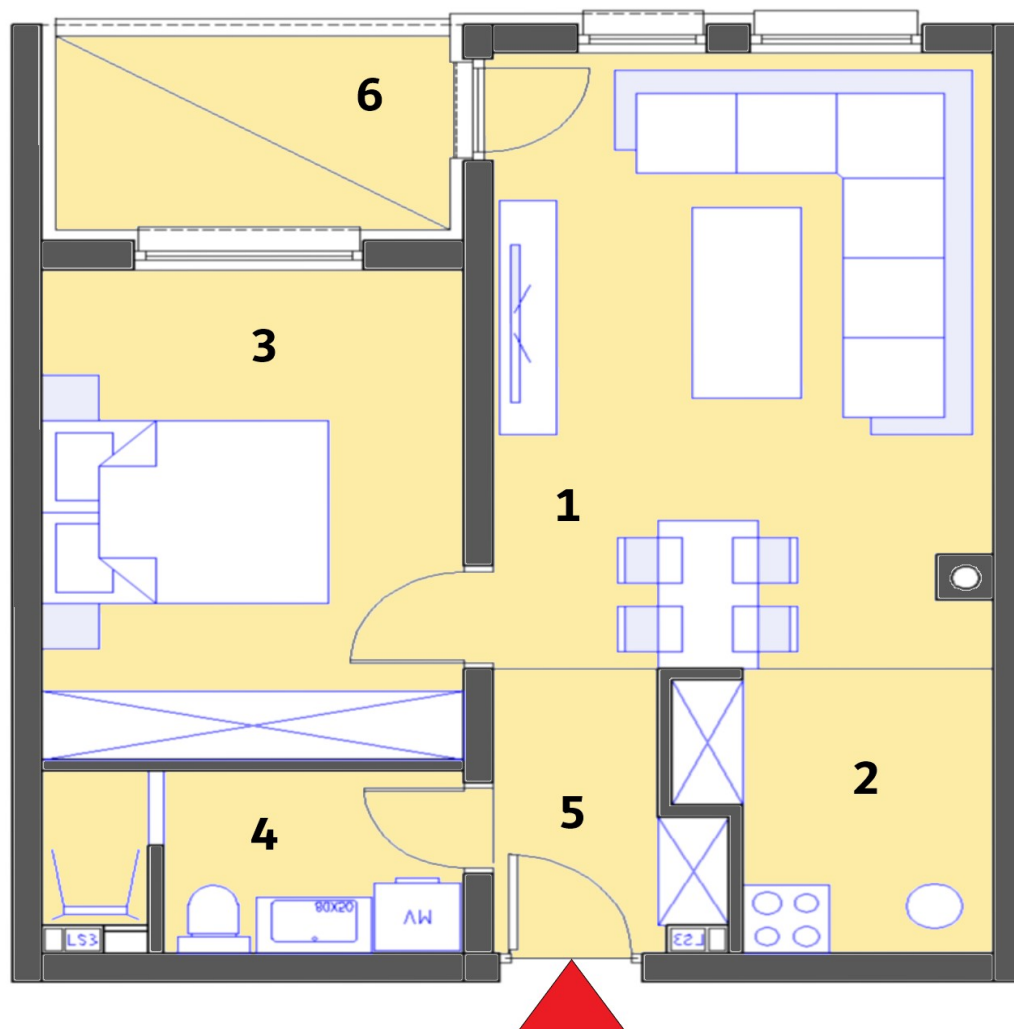


Stambeni objekat „MALEZIJKKA“ - OSNOVA 2. KATA

Lamela "B" - Stan br. 315



STAN 315	Lamela B	Nivo:	2. KAT
		Tip stana:	DVOSOBAN
PROSTORIJE	[m ²]	Lodje	[m ²]
1. Dnevna soba + terpezarija	18,74	6. Lodja	4,68
2. Kuhinja	4,92		
3. Soba 1	12,68		
4. Kupatilo	4,44		
5. Ulaz	3,37		
Ukupna NETTO pov.[m2]	44,15	0,75x	3,51
Ukupno STAN 315			47,66