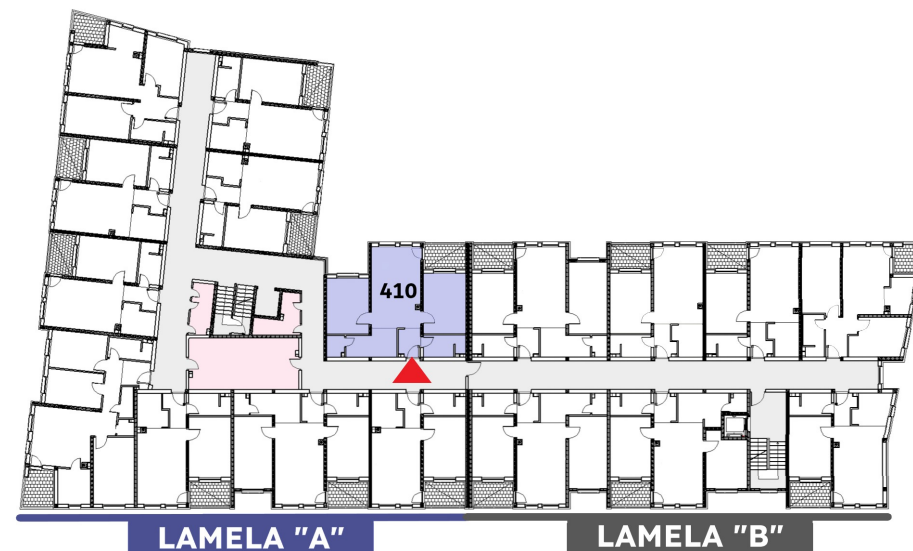
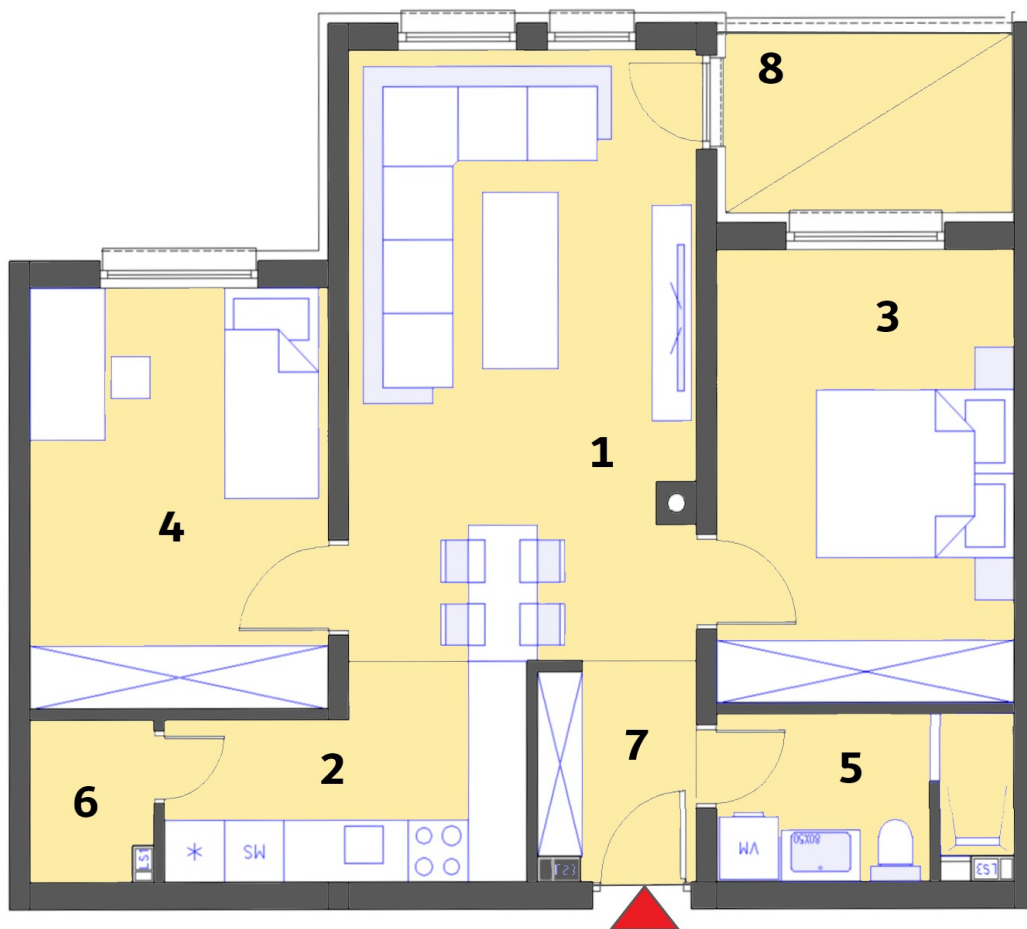


Stambeni objekat „MALEZIJKKA“ - OSNOVA 3. KATA

Lamela "A" - Stan br. 410



STAN 410	Lamela A	Nivo: 3. KAT	
		Tip stana: TROSOBAN	
PROSTORIJE	[m ²]	Lodje	[m ²]
1. Dnevna soba + terpezarija	20,14	8. Lodja	4,88
2. Kuhinja	6,65		
3. Soba 1	12,90		
4. Soba 2	12,00		
5. Kupatilo	4,52		
6. Ostava	1,86		
7. Ulaz	3,21		
Ukupna NETTO pov.[m2]	61,28	0,75x	3,66
Ukupno STAN 410			64,94