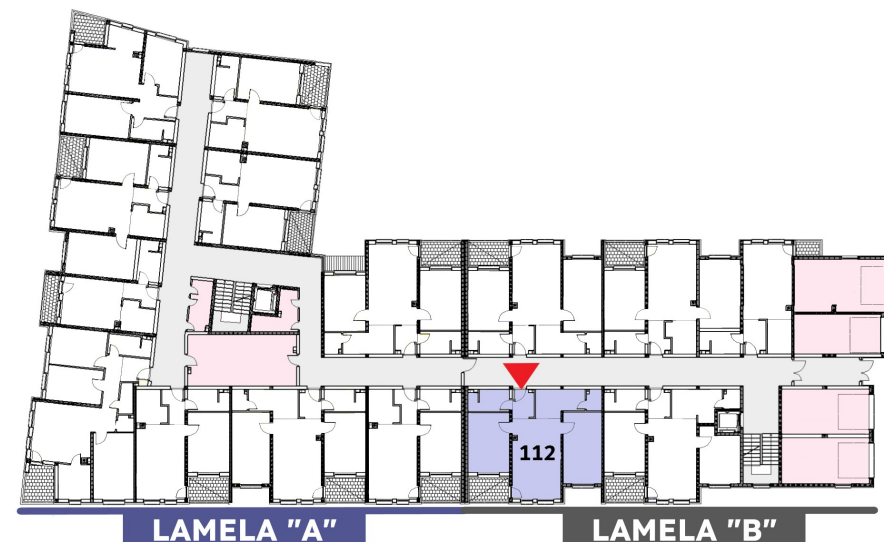
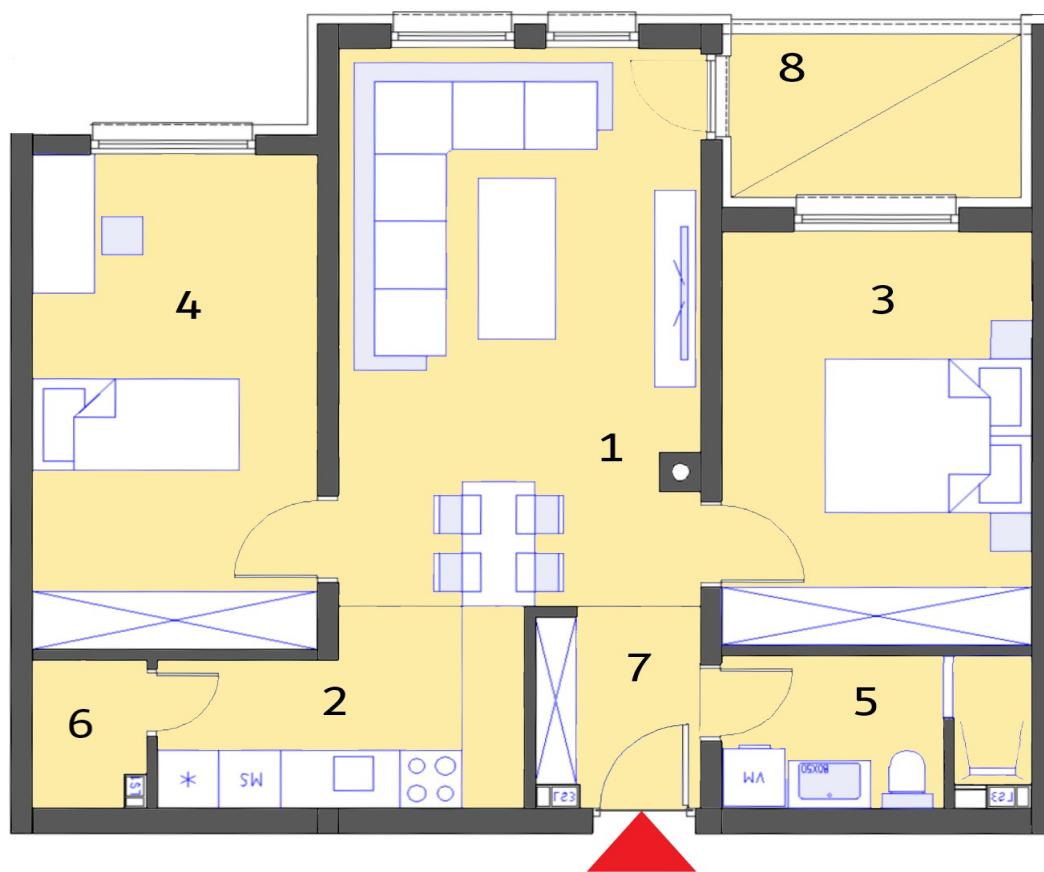


Stambeni objekat „MALEZIJKKA“ - OSNOVA PRIZEMLJA

Lamela "B" - Stan br. 112



STAN 112	Lamela B	Nivo:	PRIZEMLJE
		Tip stana:	TROSOBAN
PROSTORIJE	[m ²]	Lodje	[m ²]
1. Dnevna soba + terpezarija	20,14	8. Lodja	4,76
2. Kuhinja	6,49		
3. Soba 1	12,90		
4. Soba 2	14,16		
5. Kupatilo	4,52		
6. Ostava	1,63		
7. Ulaz	3,21		
Ukupna NETTO pov.[m ²]	63,05	0,75x	3,57
Ukupno STAN 112			66,62