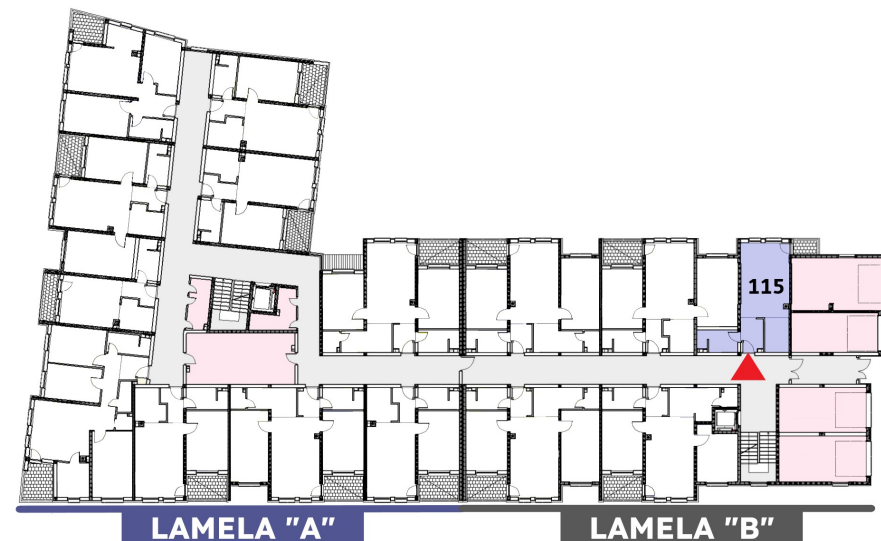
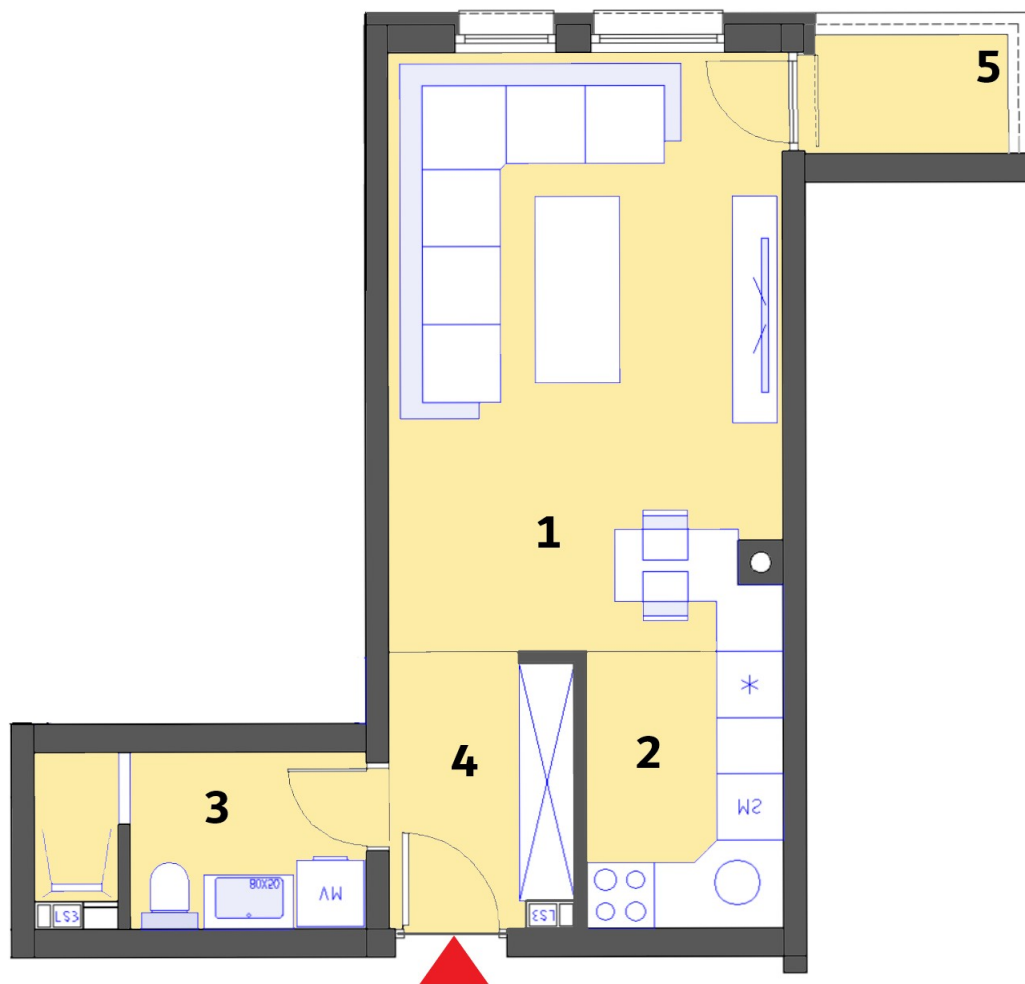


Stambeni objekat „MALEZIJKKA“ - OSNOVA PRIZEMLJA

Lamela "B" - Stan br. 115



STAN 115	Lamela B	Nivo:	PRIZEMLJE
		Tip stana:	JEDNOSOBAN
PROSTORIJE	[m ²]	Lodje	[m ²]
1. Dnevna soba + terpezarija	18,74	5. Lodja	1,70
2. Kuhinja	4,37		
3. Kupatilo	4,44		
4. Ulaz	3,97		
Ukupna NETTO pov.[m2]	31,52	0,5x	0,85
Ukupno STAN 115			32,10