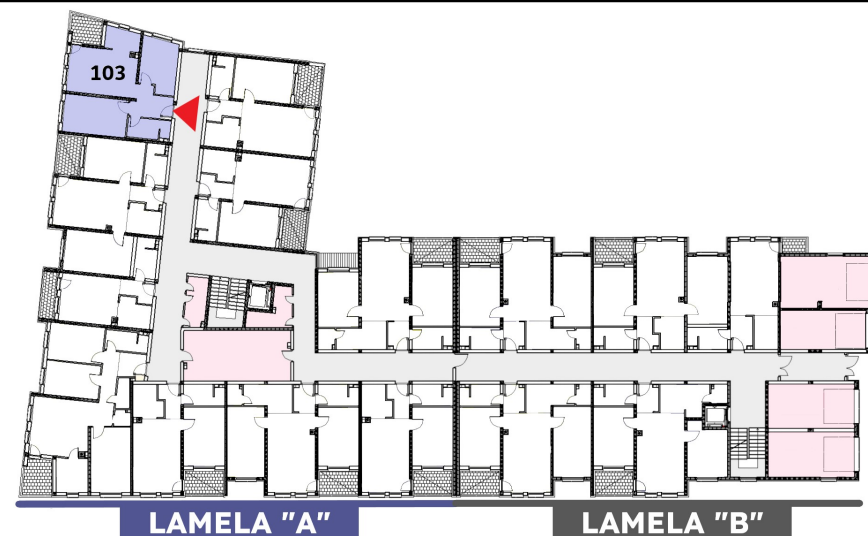
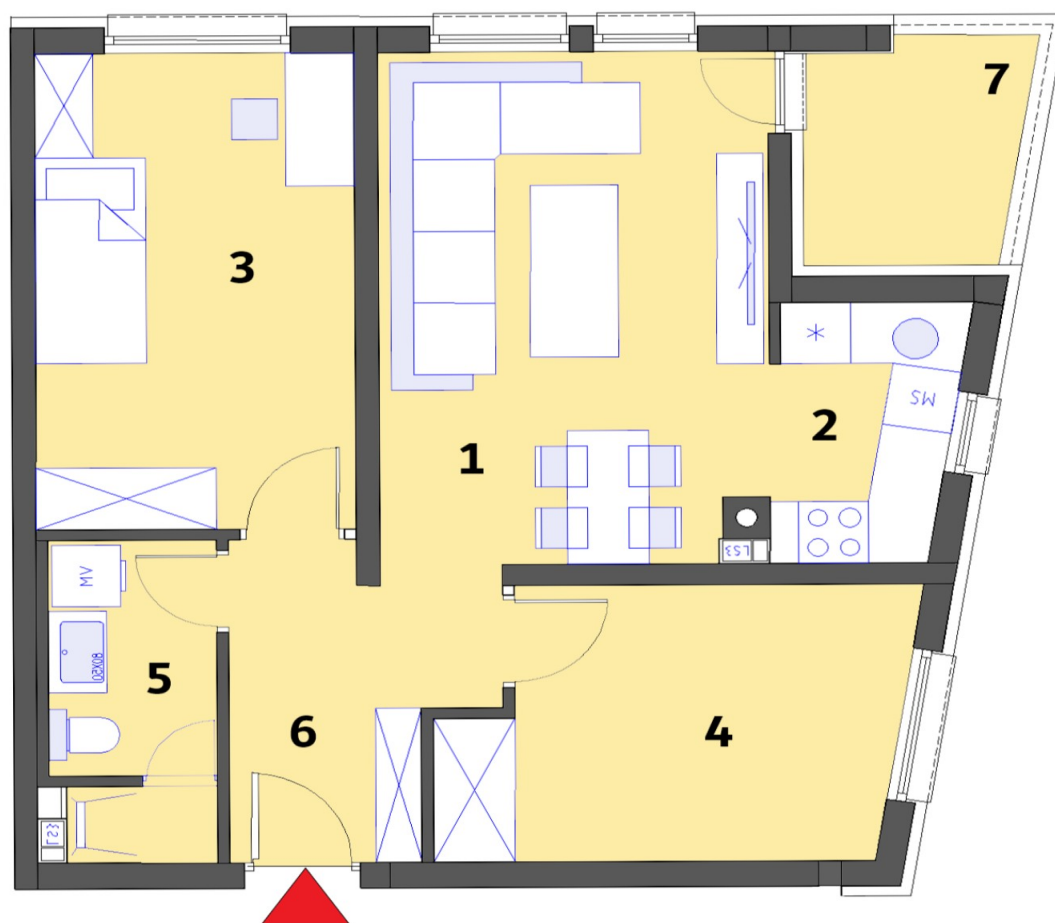


Stambeni objekat „MALEZIJKKA“ - OSNOVA PRIZEMLJA

Lamela "A" - Stan br. 103



STAN 103	Lamela A	Nivo:	PRIZEMLJE
		Tip stana: TROSOBAN	
PROSTORIJE	[m ²]	Lodje	[m ²]
1. Dnevna soba + terpezarija	16,49	7. Lodja	4,02
2. Kuhinja	3,92		
3. Soba 1	12,79		
4. Soba 2	9,91		
5. Kupatilo	4,37		
6. Hodnik	6,01		
Ukupna NETTO pov.[m2]	53,49	0,75x	3,02
Ukupno STAN 103			56,51