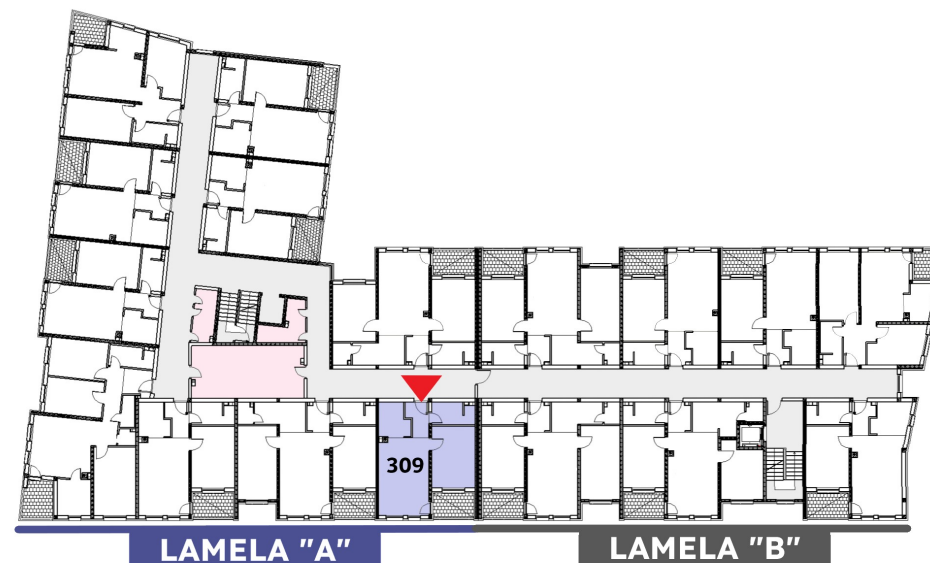
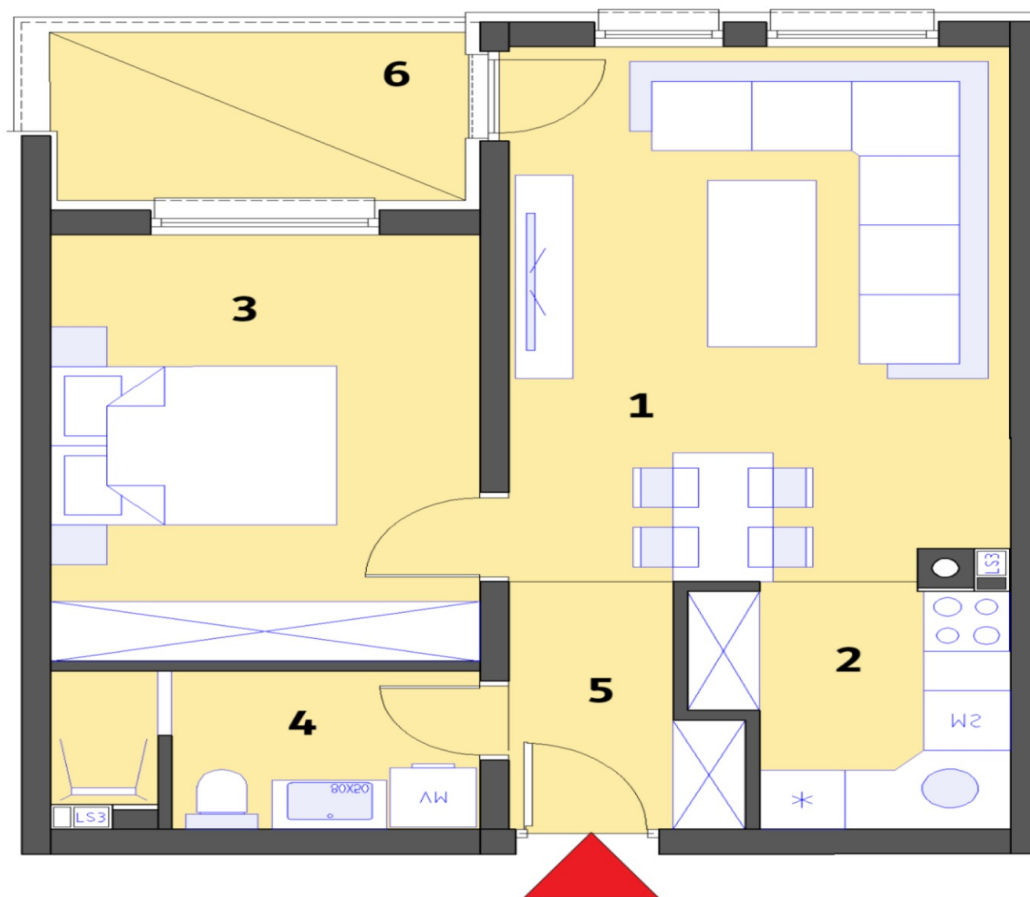


# Stambeni objekat „MALEZIJKKA“ - OSNOVA 2. KATA

Lamela "A" - Stan br. 309



STAN 309	Lamela A	Nivo: <b>2. KAT</b>	
		Tip stana: <b>DVOSOBAN</b>	
PROSTORIJE	[m <sup>2</sup> ]	Lodje	[m <sup>2</sup> ]
1. Dnevna soba + terpezarija	18,68	6. Lodja	4,76
2. Kuhinja	4,91		
3. Soba 1	12,90		
4. Kupatilo	4,52		
5. Ulaz	3,43		
Ukupna NETTO pov.[m2]	<b>44,44</b>	0,75x	<b>3,57</b>
<b>Ukupno STAN 309</b>			<b>48,01</b>