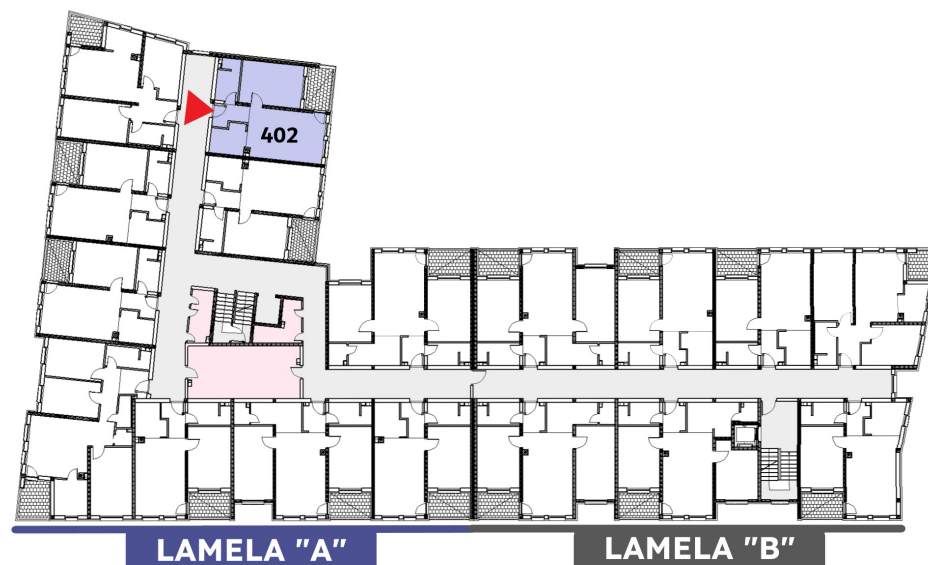
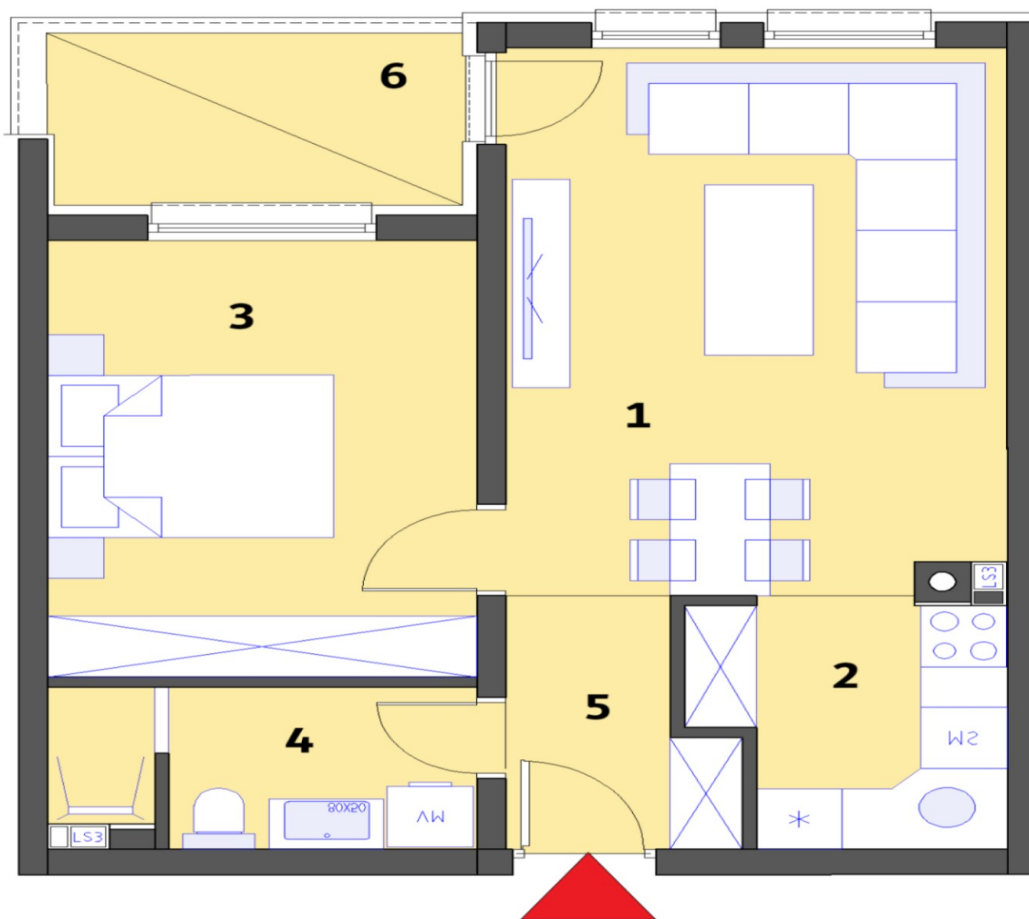


# Stambeni objekat „MALEZIJKKA“ - OSNOVA 3. KATA

Lamela "A" - Stan br. 402



STAN 402	Lamela A	Nivo:	3. KAT
		Tip stana:	DVOSOBAN
PROSTORIJE	[m <sup>2</sup> ]	Lodje	[m <sup>2</sup> ]
1. Dnevna soba + terpezarija	18,68	6. Lodja	4,89
2. Kuhinja	4,91		
3. Soba 1	12,90		
4. Kupatilo	4,52		
5. Ulaz	3,43		
Ukupna NETTO pov.[m2]	44,44	0,75x	3,67
<b>Ukupno STAN 402</b>			<b>48,11</b>